

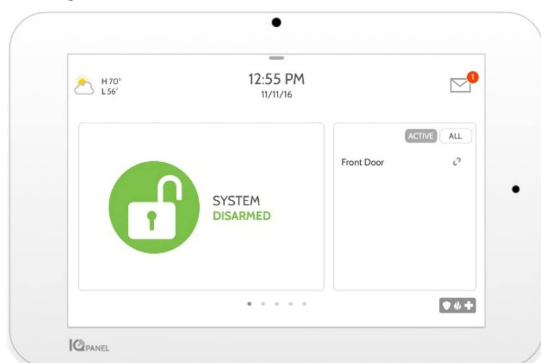
# Qolsys - IQ Motion-S

## Compatible Alarm Systems:

### Interlogix/GE



### Qolsys IQ2



### Qolsys IQ4



## Qolsys - IQ Motion-S

**WARNING** - This will require a ladder. If you do not feel comfortable climbing a ladder, please contact the office to schedule an appointment.

Most motion sensors will be mounted around 8ft-10ft in the corner of a room. This will require a ladder in order to reach the detector to change the battery.

1. Motion detectors are generally mounted with 2 screws in the wall. Proceed with caution when removing cover.



2. Locate the push tab underneath, you will need to grasp the motion with your thumb at the bottom (on tab), using your other fingers on top to squeeze the tab.



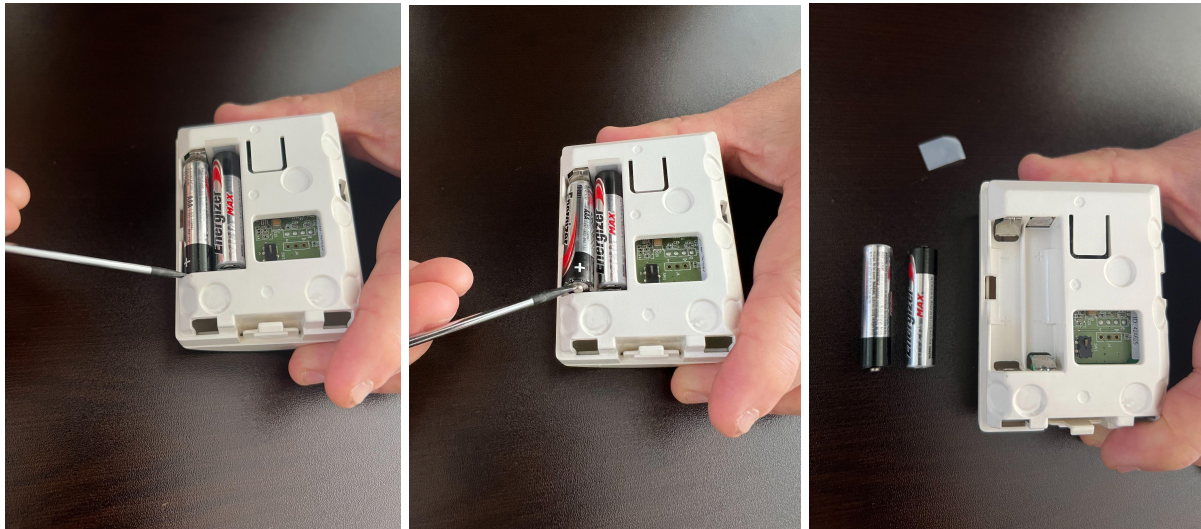
## Qolsys - IQ Motion-S

3. Remove the cover by squeezing the tab, pulling the button toward you and lifting the cover off.



## Qolsys - IQ Motion-S

4. Remove and replace the battery (2 - AAA. Recommend Lithium). You may need a flathead screwdriver to assist you.



5. Please make sure the positive and negative sides are in the right position. In the photo below, the left battery positive is down
6. Place cover back on. The top side will go in first and then you will push it close to lock the cover back on. Give the system some time and it will reset the low battery.

