

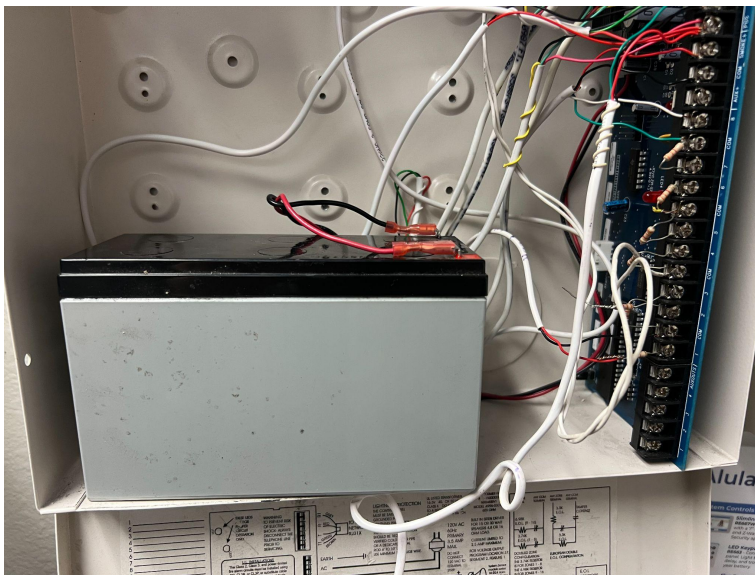
Alarm Panel Battery

12V 7Ah or 12V 3.5Ah

1. Battery will be located in a metal alarm box. (located normally in a closet or garage)



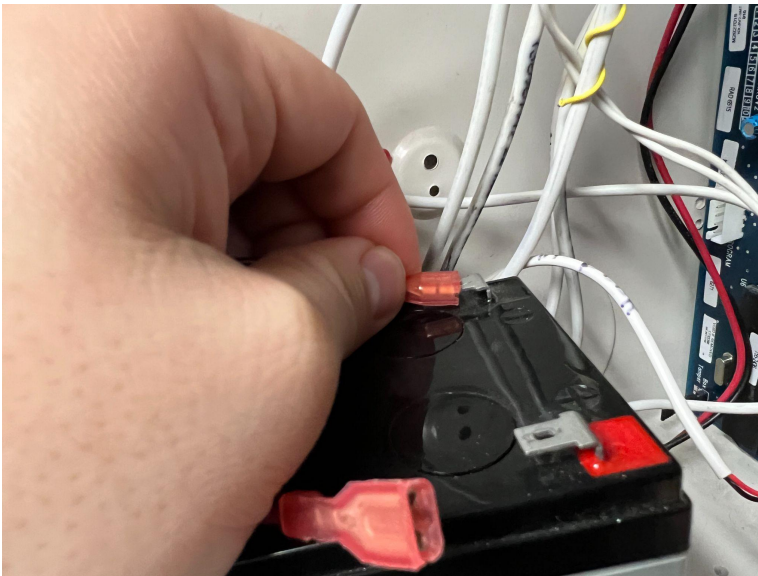
2. Locate Battery



3. Carefully remove battery leads. Sometimes they do get stuck and you can give it more force to pull it off



4. Begin putting battery leads back on. Make sure you to not reverse the colors when putting them back on.



5. Once the battery is reconnected, close the alarm panel and the battery trouble will go away (Sometimes you might need to arm and disarm the system to clear the trouble)