

DMP 1126R-W (Wireless 360 Motion)

Compatible Alarm Systems:

DMP XT30, XT50, XR150, XR550 & XTL Touch



DMP 1126R-W (Wireless 360 Motion)

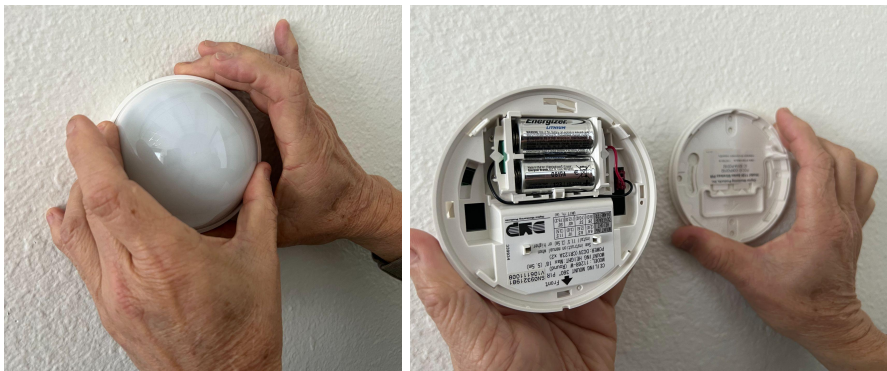
WARNING - This will require a ladder. If you do not feel comfortable climbing a ladder, please contact the office to schedule an appointment.

Motion detector will be located flat on the ceiling (heights will vary). This will require a ladder in order to reach the detector to change the battery.

1. Motion detectors are generally mounted with 2 screws in the ceiling. Proceed with caution when removing cover.

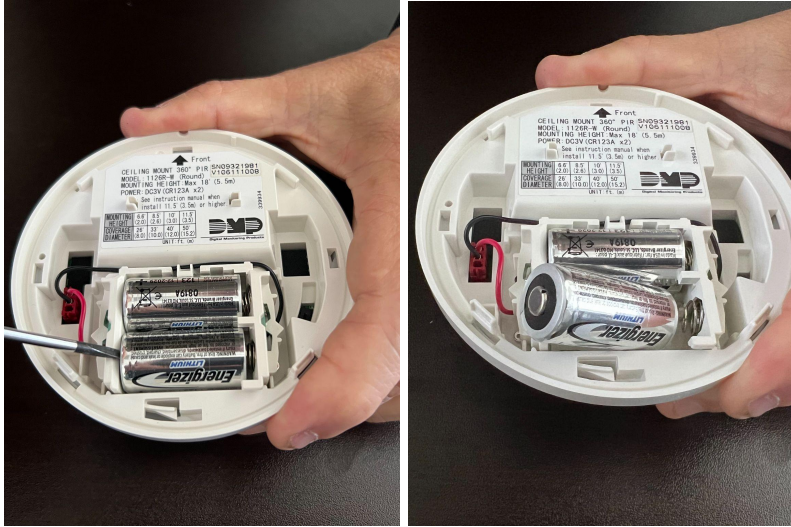


2. Twist counterclockwise to remove the cover.



DMP 1126R-W (Wireless 360 Motion)

3. Remove and replace the battery (2 - CR123. Recommend Lithium). You may need a flathead screwdriver to assist you.



4. Please make sure the positive and negative sides are in the right position. In the photo above, the positive side is opposite of the springs. Both batteries are facing in the same direction.



DMP 1126R-W (Wireless 360 Motion)

5. When placing cover back on, line up the notch on the side to the line mark on the base.
Turn the cover clockwise and the it lock in place



4. Give the system a little time and the low battery trouble will go away.