

## DMP - 1122 (Wireless Motion)

Compatible Alarm Systems:

**DMP XT30, XT50, XR150, XR550 & XTL Touch**



## DMP - 1122 (Wireless Motion)

**WARNING** - This will require a ladder. If you do not feel comfortable climbing a ladder, please contact the office to schedule an appointment.

Most motion sensors will be mounted around 8ft-10ft in the corner of a room. This will require a ladder in order to reach the detector to change the battery.

1. Motion detectors are generally mounted with 2 screws in the wall. Proceed with caution when removing cover.



2. Locate the set screw underneath.



## DMP - 1122 (Wireless Motion)

3. Remove the cover by pulling the bottom out first, make sure to not lose the set screw

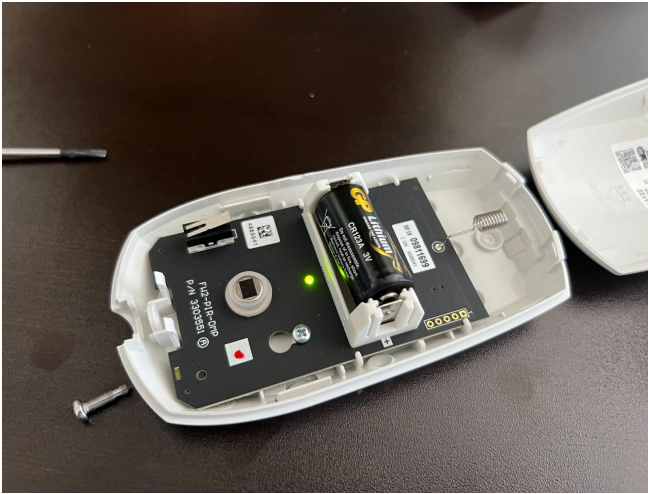


4. Remove and replace the battery (1- CR123 . Recommend Lithium). You may need a flathead screwdriver to assist you.



## DMP - 1122 (Wireless Motion)

5. Please make sure the positive and negative sides are in the right position. The positive side is the opposite side of the spring.



6. To place the cover back on, first put in the top side first (fitting into the notches as shown in the picture below).



7. Close the cover and tighten the screw back in. Low battery signal will go away.

